

Bismillahir Rahmaanir Raheem

# **Mandatory (Wajib) Washing and Shrouding Rituals for the Deceased**

**According to Ithna'Ashari School of Islam**

**(Abbreviated version For Onsite Use)\***

**Funeral Services Committee**

**Islamic Ahlul Bayt Association  
Austin, Texas**

**March 2007**

**\*For details, please refer to the approved Manual.  
This document may be laminated to keep it pure, and make it washable.**

## **Washing the body (Ghusl e Maiy'vit)**

The permission for all funeral rites must be taken from the guardian/authorized person, i.e., **heir** of first level. If such not available, then the second level person can give permission. For details, please refer to the Manual.

1. The intention must be performed by the people who are washing, which must include the phrase “achieving the nearness of Allah (*Qurbatan Ilal-laah*).”
2. It is haraam to look at the private parts of the corpse.
3. The body should be washed with 3 types of waters:
  - a. *Sidr* – Lotus or berry leaves
  - b. *Kafoor* – Camphor
  - c. Fresh water (unmixed, tap water)
4. If *Sidr* or camphor is not available, then the body should be washed three times with plain water and one *tayammum* must be added for the absence of *sidr* and camphor.
5. The washing should be done in sequence. First, wash the head and neck. Then, wash the entire body starting from the right side and next, the left side.
6. Soap should be unscented

## **Applying Camphor Powder (Hunoot / Tahnit)**

1. Apply camphor on the obligatory parts of prostration (forehead, both palms, both knees and the toes).
2. The quantity should be in a way that if someone examines the body, he can say that the camphor has been applied.
3. It should be applied after Ghusl / Tayammum.
4. The camphor should be legally obtained (Halal), have natural smell, and be pure (not Najis).

## **Shrouding the Body (Kafan)**

### **A. The Kafan consists of three obligatory parts:**

(For Mustahab parts of Kafan, please refer to the table on the next page)

- i) **Lungi** - This is an apron like loincloth that should completely cover both the front and back part of the body from the navel to the ankles.
  - ii) **Parahan** - (Kurta) a long piece of cloth similar to a shirt that covers the body from the shoulders to below the knees, preferably to the ankles.
  - iii) **Chadar** - A large piece of cloth that covers the entire body, and long and wide enough so that the front parts overlap, and the top and the bottom ends can be tied with a string.
- B. All the sheets, together, should cover the entire body.** If the three pieces do not exist then the body should be covered as much as possible.

- C. The names of Allah or any holy scripture or holy names should not be written on parts of the Kafan where there is a possibility that such parts might become impure and Najis.
- D. Two fresh twigs of a tree inscribed with *Shahadah* (Kalimah) called *Jareedatain* wrapped in cotton wool should be kept under the armpits of both arms before wrapping the chador. (This is highly recommended, but not wajib.)

**Note: All these pieces of cloth are pre-arranged systematically in their proper order in the stated sequence and kept ready on the floor over a mat so as to facilitate shrouding when the body is laid on them. The order in which the pieces of kafan are systematically arranged and kept to facilitate wrapping is as follows:**

**From Bottom (outermost) to the Top (closest to body.) These are arranged with belts first, then the rest of parts of Kafan on top of each other, before the body is placed on table to be wrapped.**

## Table Kafan Parts

		Male	Female
1)Belts - upper, middle and lower to tighten the whole kafan		X	X
2) Big Chadar ( <i>Big Me'zar</i> )	Wajib	X	X
3) Small Chadar ( <i>Small Me'zar</i> )	Mustahab	X	X
4) Parahan ( <i>Qamees</i> )	Wajib	X	X
5) Seenaband ( <i>Laffafa</i> )	Mustahab		X
6) Lungi or Waistcloth ( <i>E'zaar</i> )	WAJIB	X	X
7) Pajama ( <i>Thigh Cover</i> )	Mustahab	X	X
8) Scarf ( <i>Maqna'a</i> ) for female Head cover( <i>Amama</i> ) for male	Mustahab	X	X
9)*Private Parts Cover*	Mustahab	X	X
Cotton pads for body orifices	Mustahab		X

**\*\* It is recommended to apply the Private Part cover as soon as body is washed to respect the privacy of the deceased.**

**The wrapping is performed from the top (closest to body) to the bottom (outermost.) Finally, after shrouding is complete, tie the belts.**

**See the following illustrations of different parts of the Kafan. The arrangements for male and female are shown separately.**

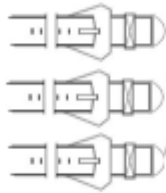
# Parts of Kafan For Male

**(5) Lungi**  
(Waistcloth or Ezaar)  
60 x 54 inches  
(WAJIB)

**(4) Parahan**  
(Qamees)  
  
94 x 36 inches  
(WAJIB)

**(2) Big Chadar (Me'zar)**  
  
84 x 100 inches  
(WAJIB)

**(1) Belts**  
Upper  
Middle  
Lower



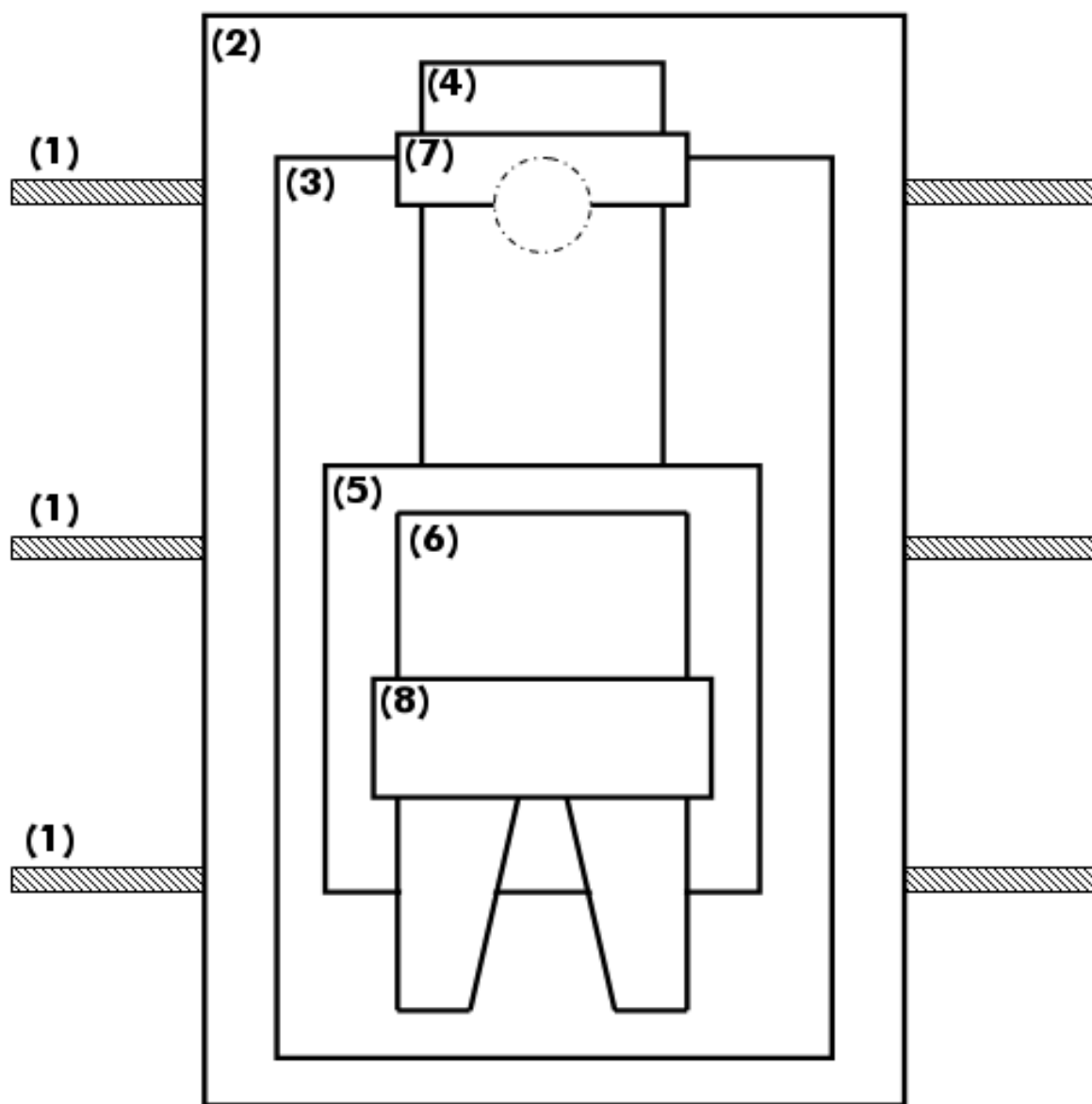
**(6) Pajama**  
(covers up to  
the thighs)  
40 inches wide  
(MUSTAHAB)

**(3) Small Chadar (Me'zar)**  
  
80 x 95 inches  
(MUSTAHAB)

**(7) Amama/Head Cover**  
48 x 12 inches  
(SUNNAT)

**(8) Private Part Cover**  
24 x 72 inches  
(SUNNAT)

## Parts of Kafan Arranged For Male



1. Belts (upper, mid, lower)
2. Big Chadar (big *Me'zar*)
3. Small Chadar (small *Me'zar*)
4. Parahan (*Qamees*)
5. Lungi (waist cloth or *E'zaar*)
6. Pajama (thigh cover)
7. Pagdi (*Amama* or head cover)
8. Private part cover

First, place the belts (#1) on the table. This is the bottom most (outer most). Thereafter, place the rest of the parts of the Kafan one above another in this order: (2), (3), (4), and (5). (6), (7), (8)

# Parts of Kafan For Female

**(6) Lungi**  
(Waistcloth or Ezaar)  
60 x 54 inches  
(WAJIB)

**(4) Parahan**  
(Qamees)  
94 x 36 inches  
(WAJIB)

**(2) Big Chadar (Me'zar)**  
84 x 100 inches  
(WAJIB)

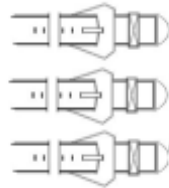
**(8) Scarf**  
(Maqna'a)  
36 x 36 inches  
(SUNNAT)

**(7) Pajama**  
(covers up to  
the thighs)  
40 inches wide  
(MUSTAHAB)



**(3) Small Chadar (Me'zar)**  
80 x 95 inches  
(MUSTAHAB)

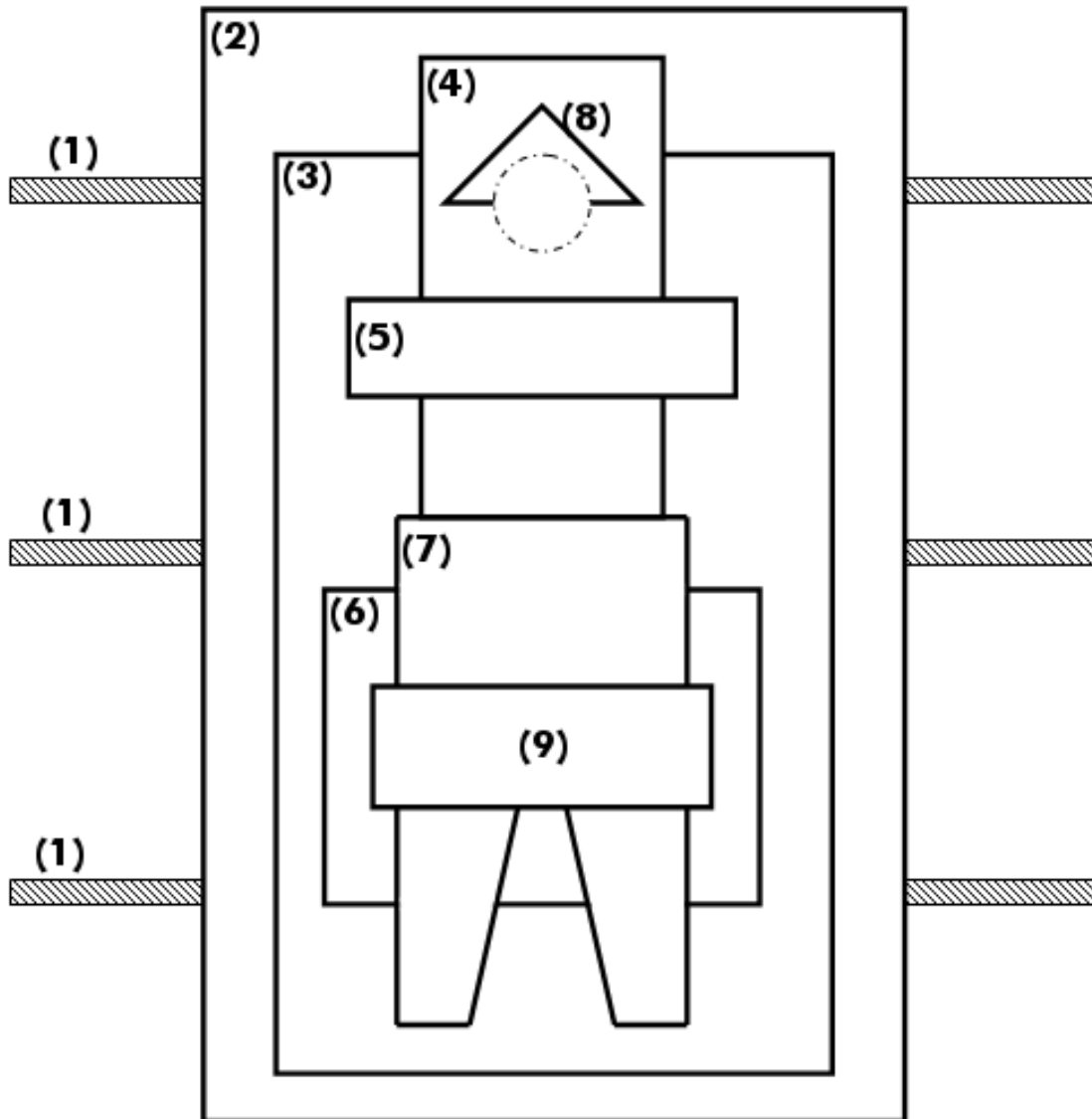
**(1) Belts**  
Upper  
Middle  
Lower



**(5)**  
Seenband (Laffafa)  
24 x 60 inches  
(SUNNAT)

**(9)**  
Private Part Cover  
24 x 72 inches  
(SUNNAT)

## Parts of Kafan Arranged For Female



1. Belts (upper, mid, lower)
2. Big Chadar (big *Me'zar*)
3. Small Chadar (small *Me'zar*)
4. Parahan (*Qamees*)
5. Seenaband (*Laffafa*)
6. Lungi (Waistcloth or *E'zaar*)
7. Pajama (thigh cover)
8. Scarf (head cover or *Maqna'a*)
9. Private part cover

First, place the belts (#1) on the table. This is the bottom most (outer most). Then place the other parts of Kafan one above another in this order: (2), (3), (4), and (5). (6), (7), (8), (9).